

Flow cell for one oxygen sensor with needle valve and flow measurement

QV-Flow PMMA OTG

Flow cell made of acrylic glass for one oxygen sensor Oxytrace G including mounting angle made of stainless steel.

With needle valve and flow measurement.

Technical data:

Flow cell made of acrylic glass on mounting angle made of stainless steel.

Sample inlet: Swagelok connection for tube ¼"

Sample outlet: tube Ø 6 mm
Pressure-free outlet necessary (atmospheric drain), use a funnel

Sample flow: 6-25 l/h

Sample flow measuring range: 0-25 l/h

Sample pressure: 1 bar

Sample temperature: 50 °C

Suspended solids: less than 10 ppm

No oil and no grease

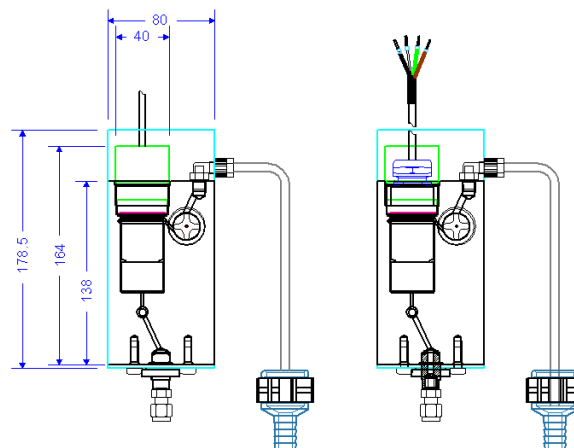
Size:

Width: 80 mm

Height incl. sensor: 164 mm

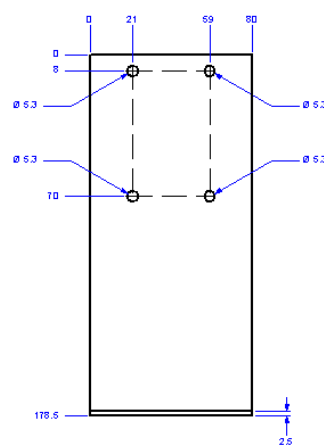
Height incl. mounting angle + sensor: 178.5 mm

Mounting: screws M5



QV-Flow PMMA OTG with dimensions (front view)

QV-Flow PMMA OTG (front view)



Mounting angle

Drawings with sensor and funnel (both not included in delivery!)

Delivery includes:

Flow cell QV-Flow PMMA Oxytrace on mounting angle and four M5 screws..

Process connections: Swagelok connection for ¼" tube, flexible tube Ø 6 mm

Order scheme	QV-Flow PMMA OTG	A - 83 . 4 2 3 . 1 0	
Flow measurement.....	flow sensor with 1 m cable.....		1
	flow sensor with 5 m cable.....		5

flow sensor with 15 m

cable.....

7