

Cabinet for AMI Silica, AMI Silitrace, AMI Phosphate HL and AMI Soditrace

Steel cabinet series 18500

Steel cabinet for measuring instruments.

Cabinet base can be opened at every side, therefore tubes and cables can be led out of the cabinet in any direction.

Door with glass inlay: Reading of the display and visual check of the instrument possible without opening the cabinet door. Closure with turning lever and lock.

Rest for heavy loads (reagent containers) at the bottom of the cabinet.

Technical data:

Dimensions:

height x width x front to back size (usable width)

- 1800 x 600 x 400 mm (~500mm)
for AMI Silica, AMI Silitrace,
AMI Phosphate HL and AMI Soditrace
- 1800 x 800 x 400 mm (~700mm)
for AMI Silitrace Ultra and
AMI Sample Sequencer with AMI Monitor

Protection:

IP55 according to IEC 60529

Mechanic resistance:

IK 10 according to IEC 62262

Glass door:

security glass, conglutinated,
mechanic resistance IK 8 according to IEC
62262

Body of cabinet:

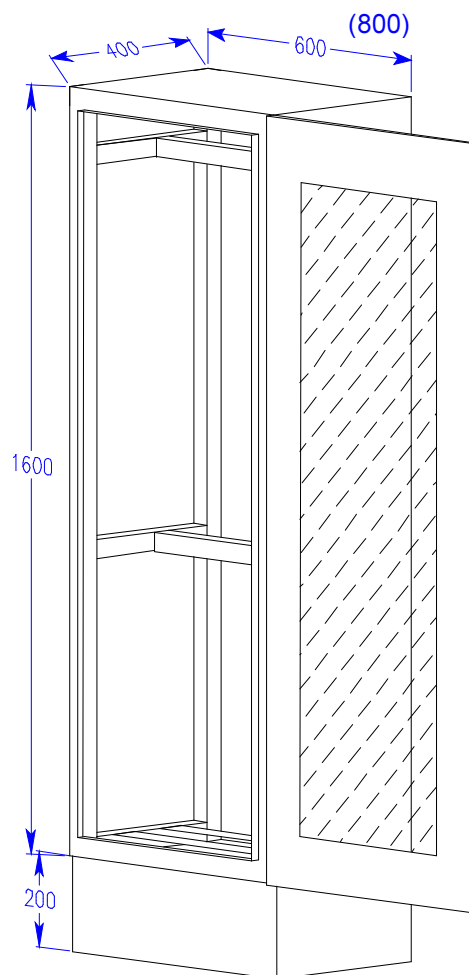
steel plate, bent and welded, 15/10 mm

Colour:

epoxy/polyester-powder coated
RAL 7035

Delivery:

Cabinet including tie-bars for the easy mounting
of the panel of the instrument.



P. O. Number	Steel cabinet series 18500	C – 89 . 600 . 01	
↑			
Variants:	Cabinet width 600 mm		0
	Cabinet width 800 mm		2

Option: C-89.600.020 Electrical heating with thermostat (400 W), 230 VAC